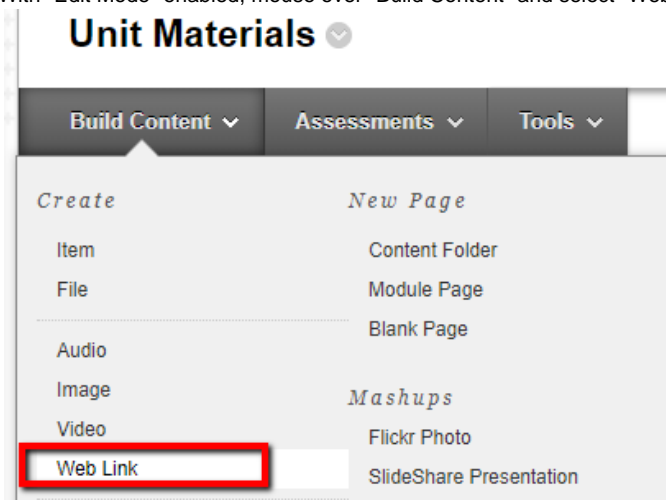


Adding "EmployABILITY" Self Assessment Tool

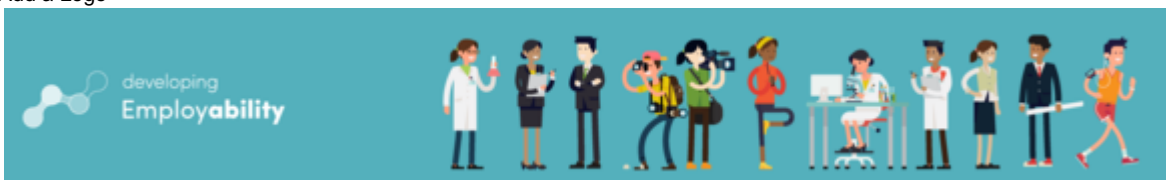
This outlines the process of adding the Employability Self Assessment Tool to your unit within Blackboard.

Step-by-step guide

1. Access the Blackboard Unit in which you wish to add the EmployABILITY Self-Assessment Tool to.
2. Navigate to a designated Content area within the unit.
3. With "Edit Mode" enabled, mouse over "Build Content" and select "Web Link".



4. In the "Name" section enter "EmployABILITY Self Assessment".
5. In the URL section copy and paste <https://student.developingemployability.edu.au/employability-self-assessment-tool>
6. In the description, please add the following text:
"Are you ready for graduate life? Worried about finding work? Not sure what to put in your CV? With the Developing Employability Student Starter Kit, you can take control of your employability development. Develop a personalised profile which identifies your unique strengths and key areas for improvement. Then, access free resources that help you create your future. With the Student Starter Kit, you can make sure you're putting your best foot forward. Get started [here](#) "
7. Add a Logo -



(Right Mouse Click - "Save Image As")

8. Click "Submit"

1. Web Link Information

* Name 4

* URL 5

For example, <http://www.myuniversity.ac.uk>

This link is to a Tool Provider. [What's a Tool Provider?](#)

2. Description

Text

For the toolbar, press **F10**

Format - Arial 12pt

7 - click here to add an image

6

Are you ready for graduate life? Worried about finding work? Not sure what to put in your CV? With the Developing Employability Student Starter Kit, you can take control of your employability development. Develop a personalised profile which identifies your unique strengths and key areas for improvement. Then, access free resources that help you create your future. With the Student Starter Kit, you can make sure you're putting your best foot forward. Get started [here](#)

Path: table > tbody > tr > td

Words: 75

Related articles

- [Adding "EmployABILITY" Self Assessment Tool](#)
- [Organisations \(Non-Teaching Units\)](#)
- [Staff & Student Access to Blackboard](#)
- [Smart Views for Grade Centre](#)
- [Blackboard Teaching Unit Creation](#)